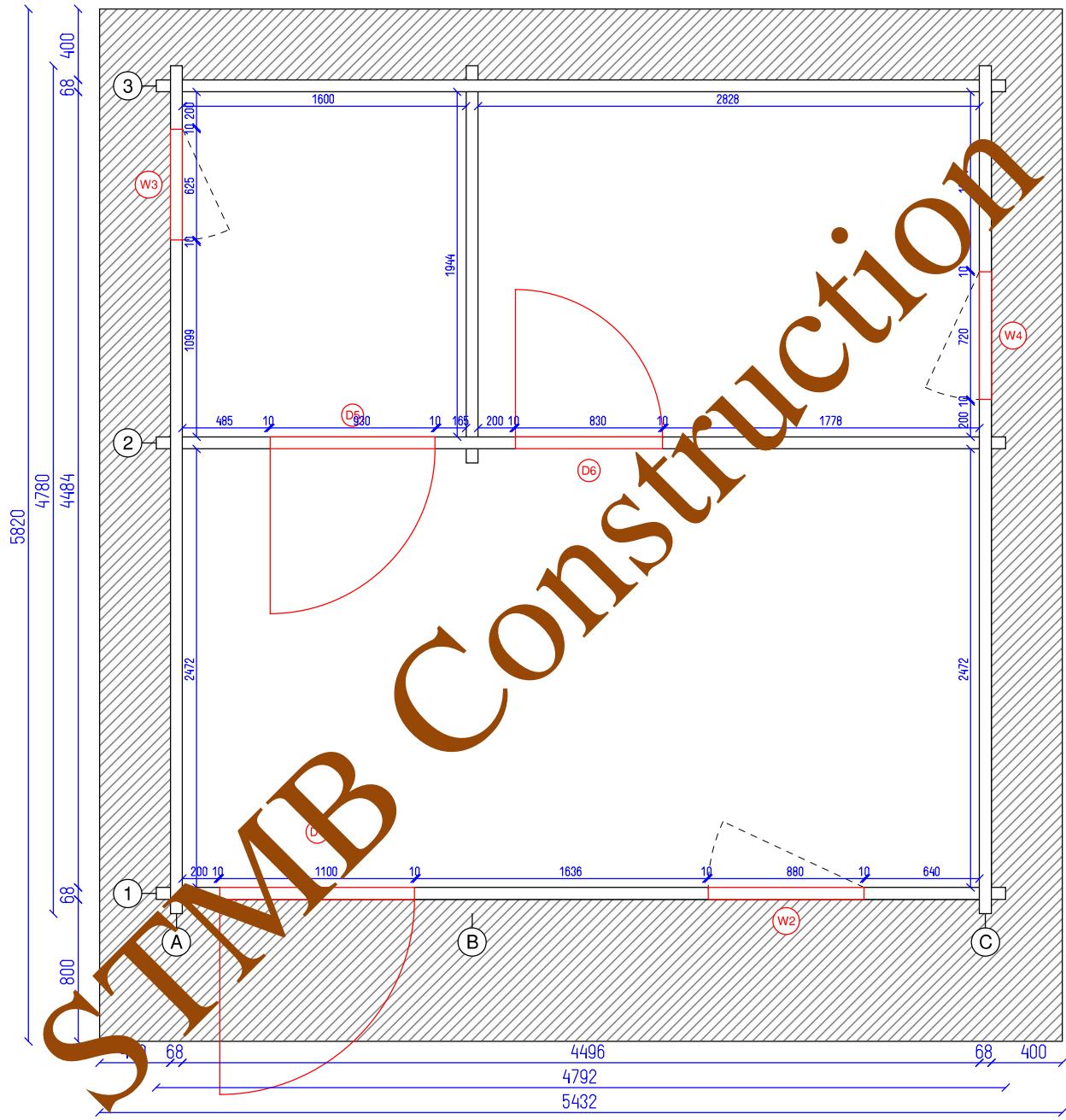
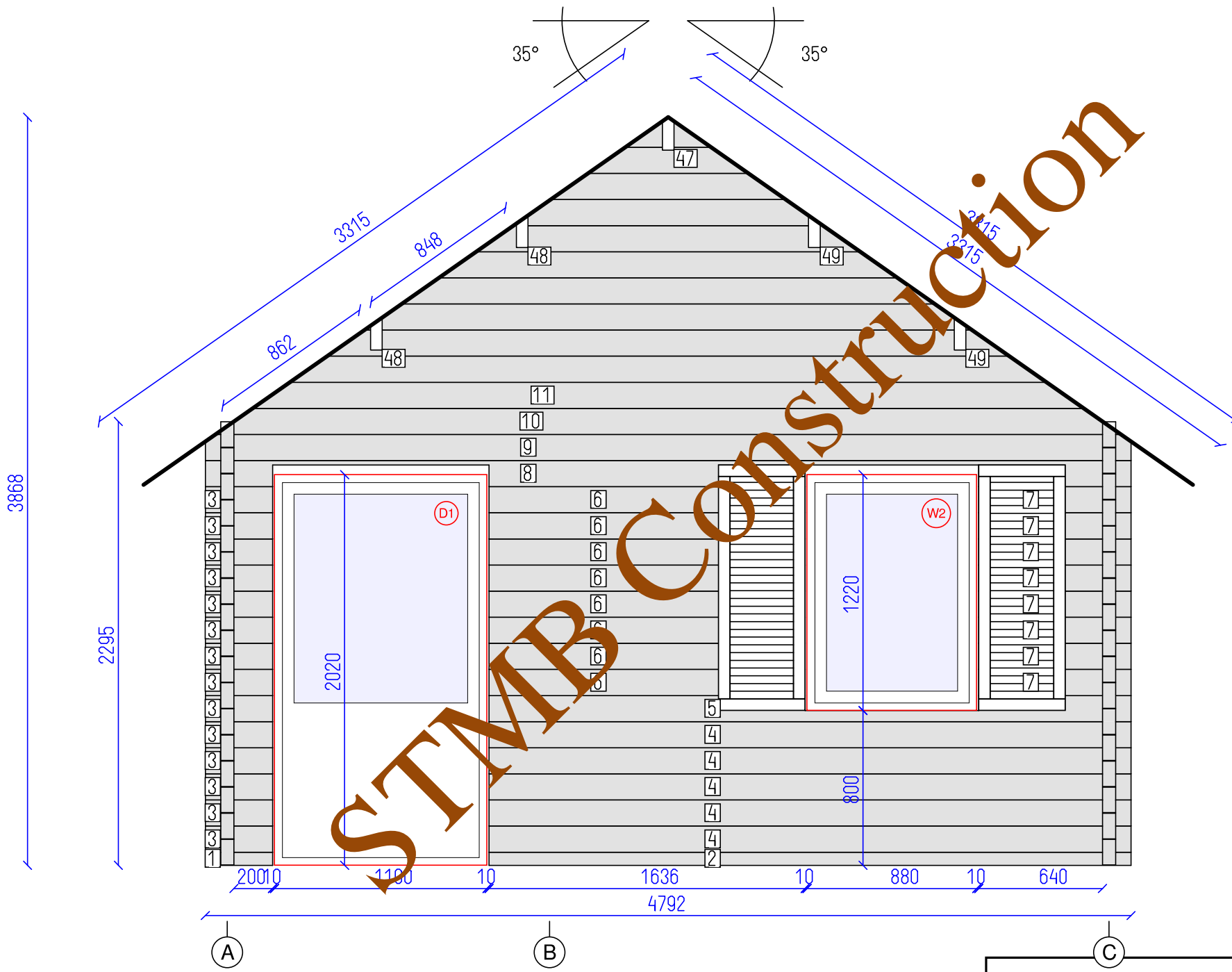


STMB Construction





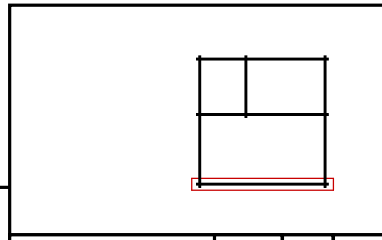


DETAILS

N	QTY
1	1
2	1
3	14
4	5
5	1
6	8
7	8
8	1
9	1
10	1
11	1
47	1
48	2
49	2

LIST OF ELEMENTS

- 1. Wall 68x68x348
 - 2. Wall 68x68x3324
 - 3. Wall 135x68x348
 - 4. Wall 135x68x3324
 - 5. Wall 135x68x3324
 - 6. Wall 135x68x1636
 - 7. Wall 135x68x788
 - 8. Wall 135x68x4792
 - 9. Wall 135x68x4792
 - 10. Wall 135x68x4686
 - 11. Wall 135x68x4300
 - 47. Roof beam 200x70x5820
 - 48. Roof beam 200x70x5820
 - 49. Roof beam 200x70x5820
- Total 14.54 m²

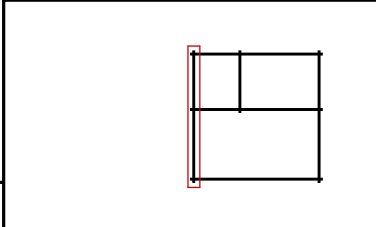
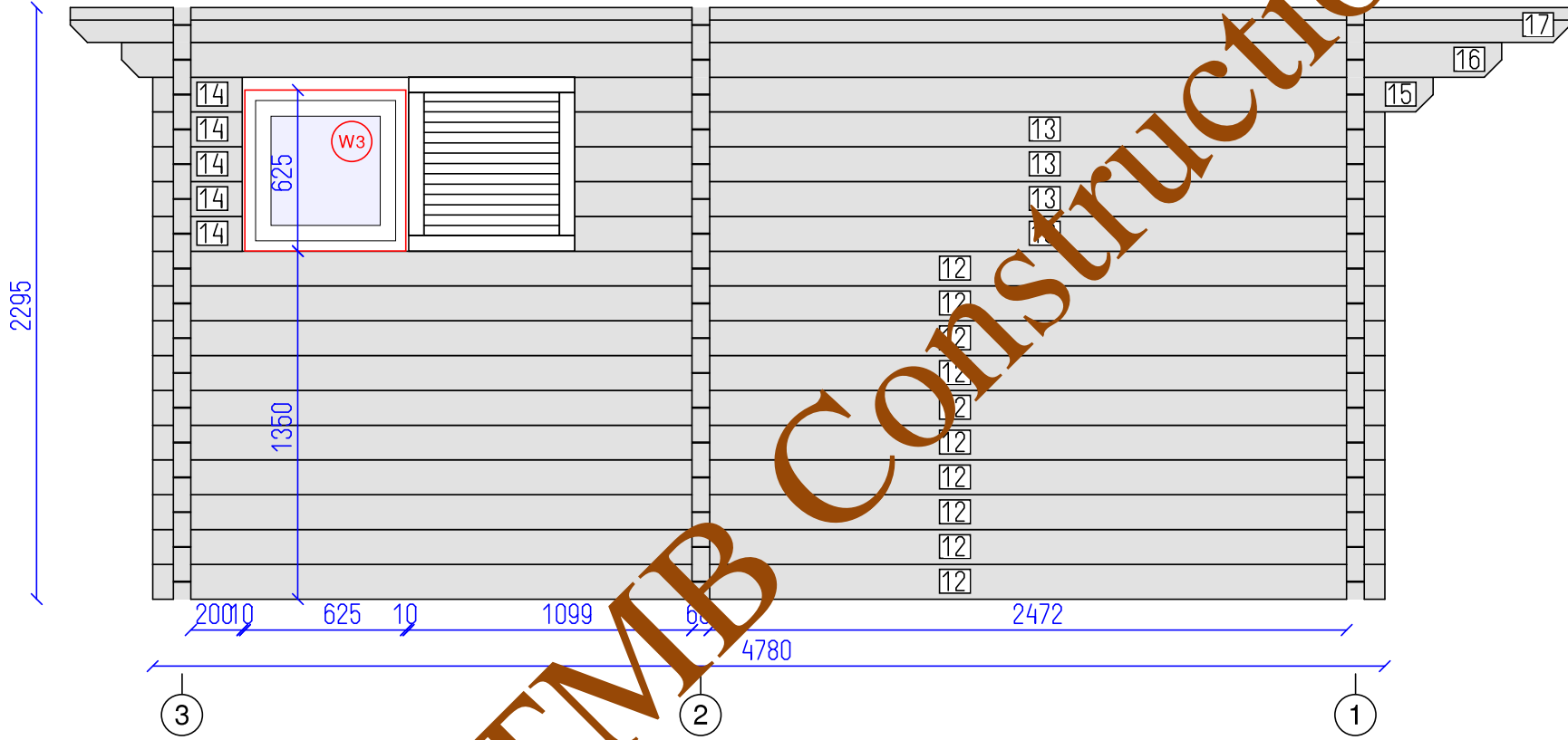


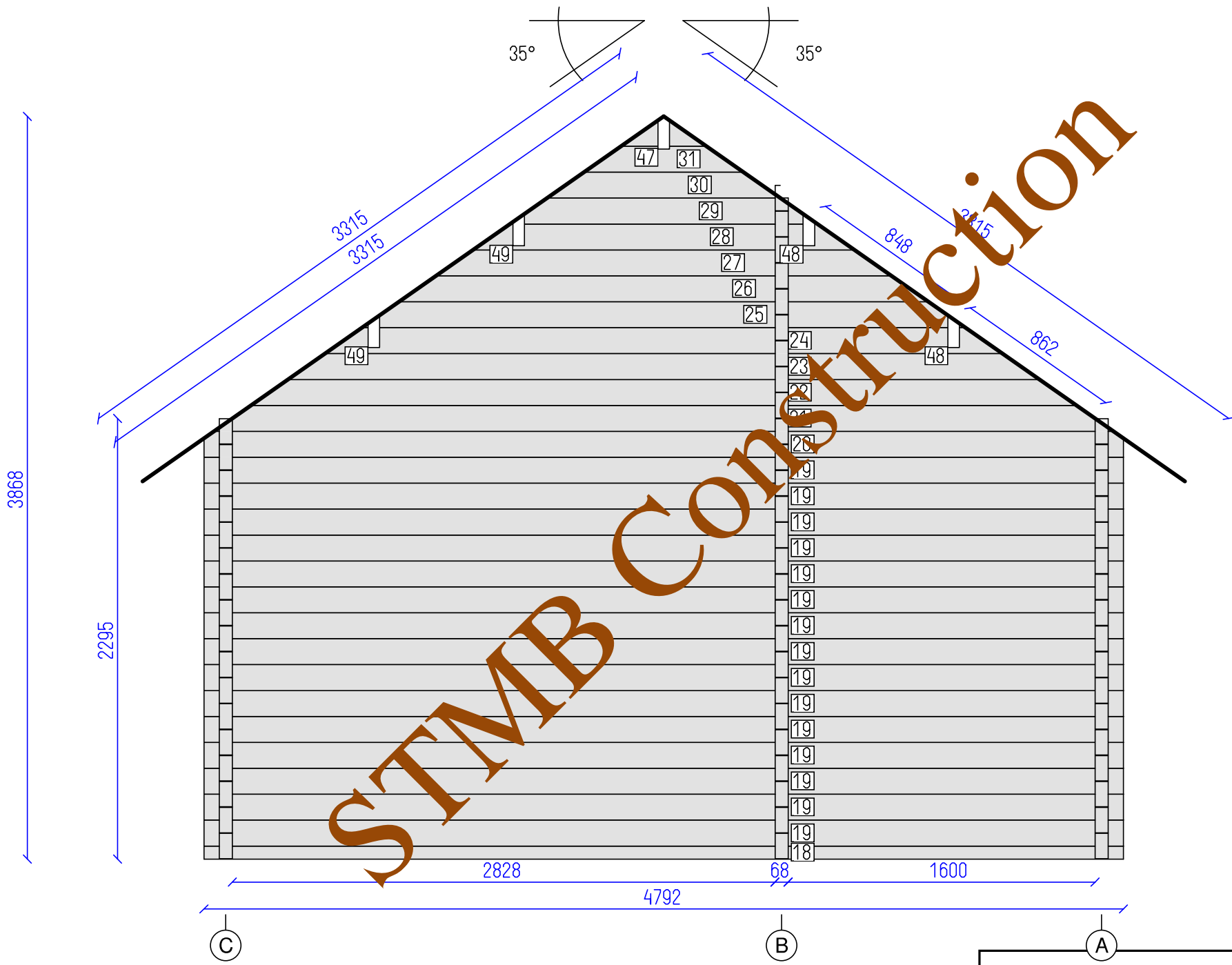
DETAILS

N	QTY
12	10
13	4
14	5
15	1
16	1
17	1

LIST OF ELEMENTS

- 12. Wall 135x68x4780
- 13. Wall 135x68x3787
- 14. Wall 135x68x348
- 15. Wall 135x68x3974
- 16. Wall 135x68x5353
- 17. Wall 135x68x5820
- Total 10.78 m²



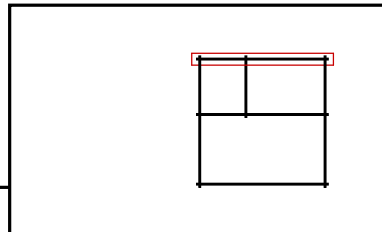


DETAILS

N	QTY
18	1
19	15
20	1
21	1
22	1
23	1
24	1
25	1
26	1
27	1
28	1
29	1
30	1
31	1
47	1
48	2
49	2

LIST OF ELEMENTS

- 18. Wall 68x68x4792
 - 19. Wall 135x68x4792
 - 20. Wall 135x68x4792
 - 21. Wall 135x68x4686
 - 22. Wall 135x68x4300
 - 23. Wall 135x68x3914
 - 24. Wall 135x68x3530
 - 25. Wall 135x68x3144
 - 26. Wall 135x68x2758
 - 27. Wall 135x68x2372
 - 28. Wall 135x68x1986
 - 29. Wall 135x68x1600
 - 30. Wall 135x68x1214
 - 31. Wall 135x68x830
 - 47. Roof beam 200x70x5820
 - 48. Roof beam 200x70x5820
 - 49. Roof beam 200x70x5820
- Total 20.59 m²

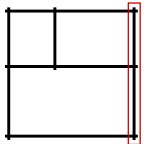
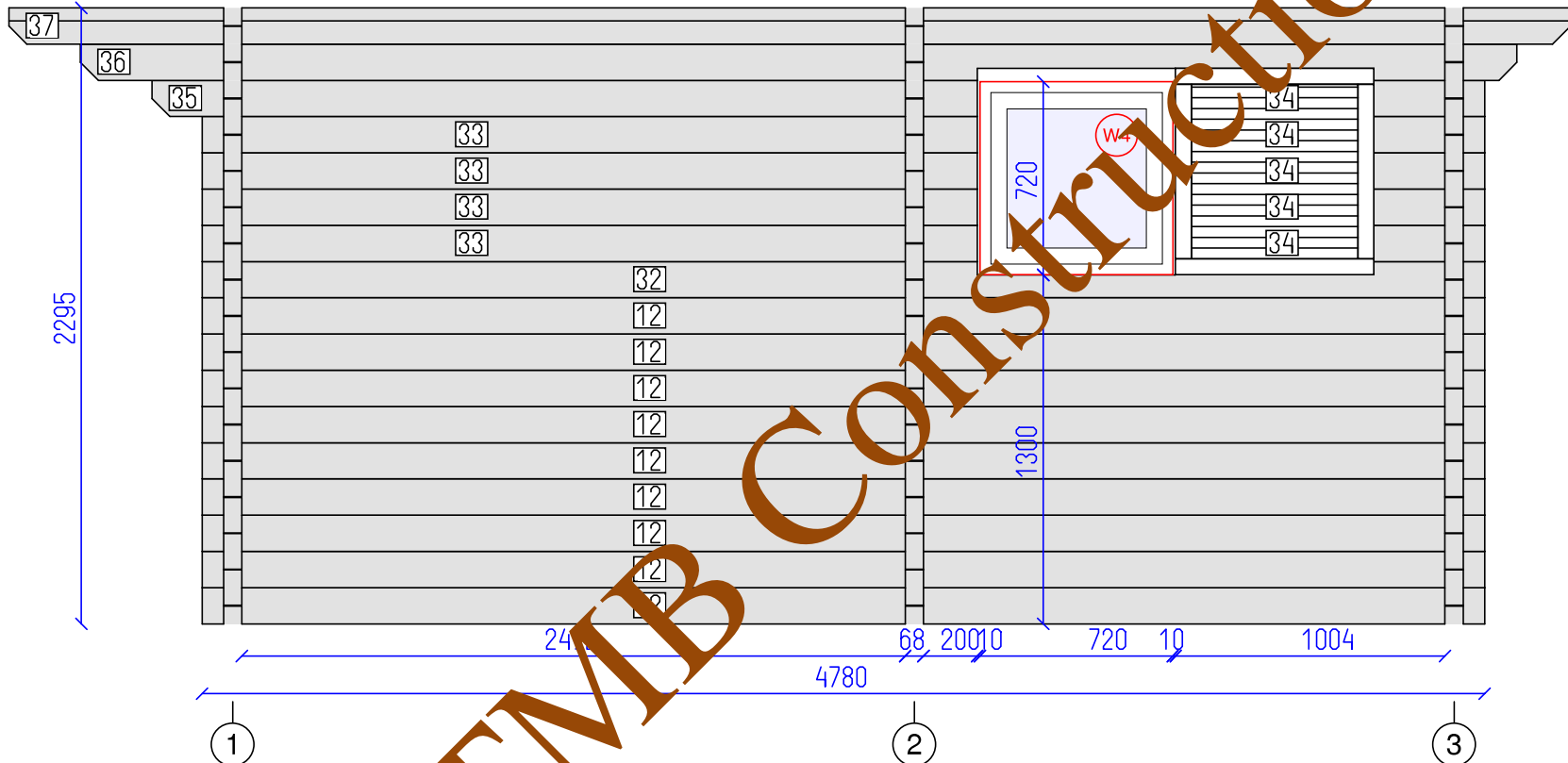


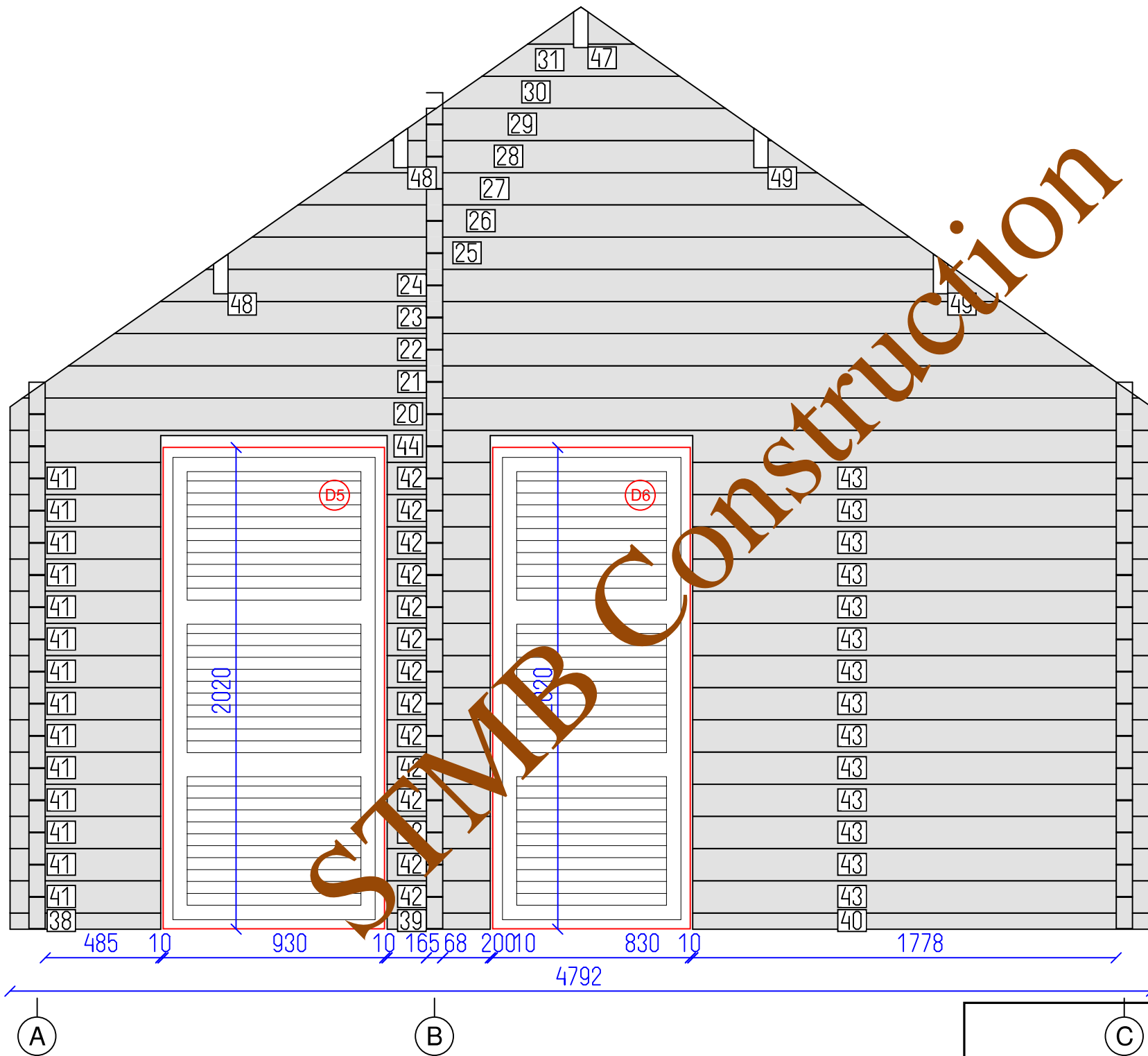
DETAILS

N	QTY
12	9
32	1
33	4
34	5
35	1
36	1
37	1

LIST OF ELEMENTS

- 12. Wall 135x68x4780
 - 32. Wall 135x68x4780
 - 33. Wall 135x68x2888
 - 34. Wall 135x68x1152
 - 35. Wall 135x68x3075
 - 36. Wall 135x68x5353
 - 37. Wall 135x68x5820
- Total 10.71 m²

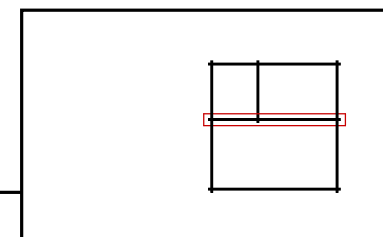


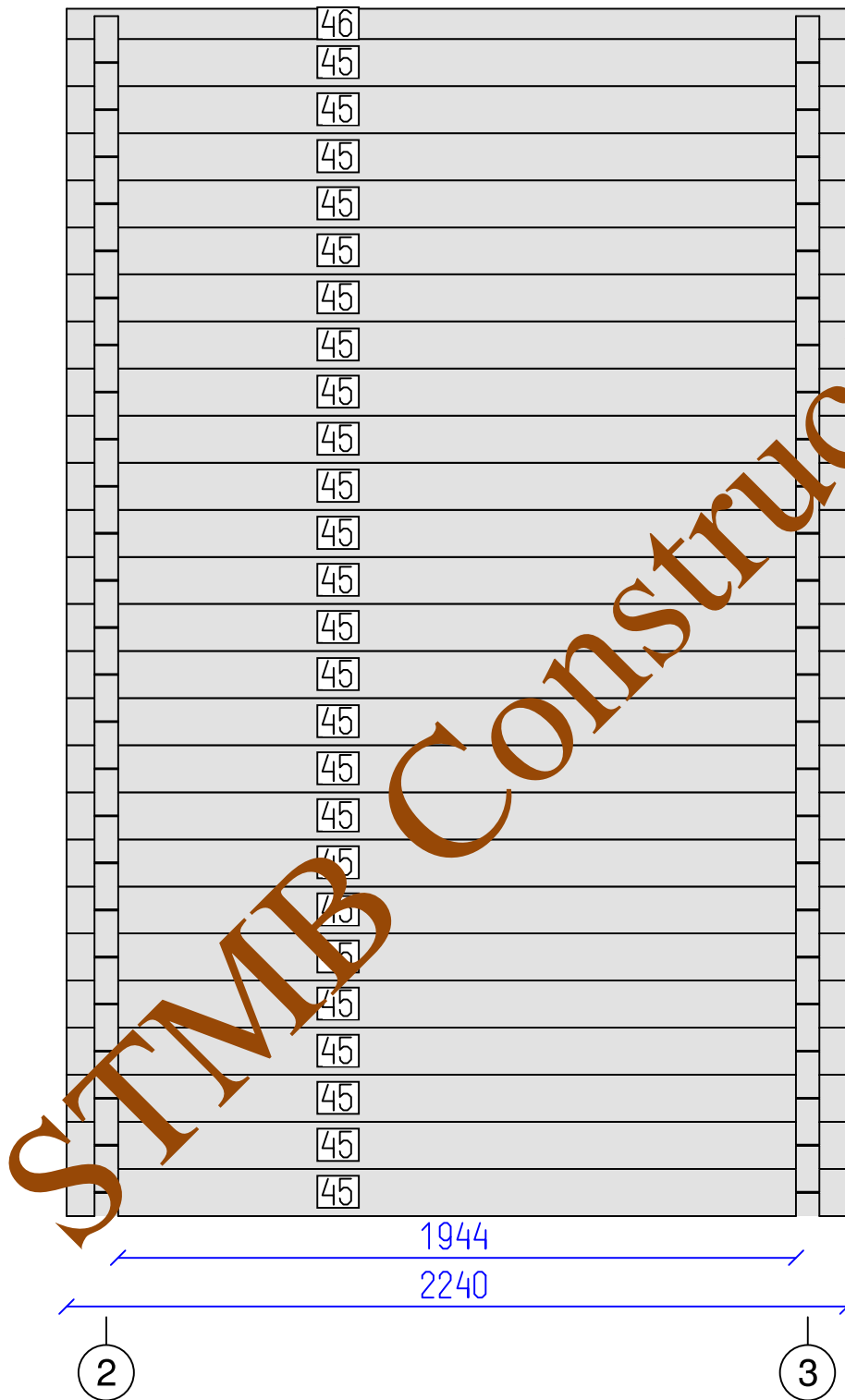


DETAILS

N	QTY
38	1
39	1
40	1
41	14
42	14
43	14
44	1
20	1
21	1
22	1
23	1
24	1
25	1
26	1
27	1
28	1
29	1
30	1
31	1
47	1
48	1
49	2

Total 17.07 m²
 Incomplete, more details in drawing...



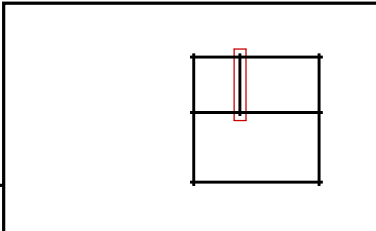


DETAILS

N	QTY
45	25
46	1

LIST OF ELEMENTS

45. Wall 135x68x2240
 46. Wall 87x68x2240
 Total 7.75 m²



2

3